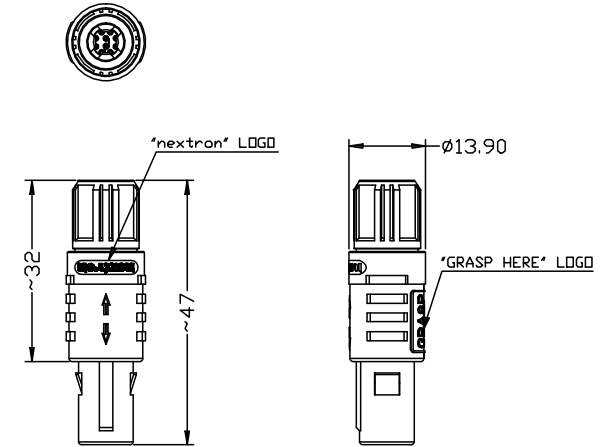


1	2	3	4	5	6	7	8				
THIS DRAWING AND THE DATA DISCLOSED HEREIN OR HEREWITH IS NOT TO BE REPRODUCED USED OR DISCLOSED IN WHOLE OR IN PART TO ANYONE WITHOUT THE PERMISSION OF JESS-LINK PRODUCTS CO.,LTD.(JPC)				CUSTOMER DRAWING DRWC-XXXXXX		REV.	ECN NO.	DESCRIPTION	MDF'D	APP'D	DATE
						01		INITIAL DESIGN	Philip	Richard	07/10/2023
						02					
						03					

SNAP LATCH ASSEMBLY P/N DESCRIPTION :

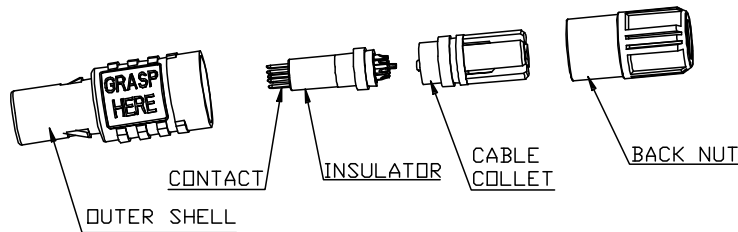
		R - M A 1 - X - X P X X - X X X X - X
1	BONED	
2	MEDICAL	
3	STYLE	A1=PA(Straight Plug with cable collet) ----SOLDER TERMINATION
4	OUTER SHELL MATERIAL	G=GREY PSU B=BLACK PSU M=WHITE PSU F=BLACK PEI P=GREY PEI H=BLACK PC J=GREY PC
5	BACK NUT MATERIAL	0= BLACK 1= WHITE 2= RED 4= YELLOW 5= GREEN 6= BLUE 8= GREY P= PEEK
6	INSULATOR	
7	CONTACT DIAMETER	1= 1.3mm (ONLY FOR 2;3 PIN) 2= 0.9mm (ONLY FOR 4;5 PIN) 3= 0.7mm (ONLY FOR 6;7;8 PIN) 4= 0.5mm (ONLY FOR 9;10;14 PIN)
8	CONTACT PLATING	1= GOLD PLATED 1u" 2= GOLD PLATED 20u" 3= GOLD PLATED 30u"
9	CABLE COLLET	1= Ø3.9mm (CABLE Ø=2.7~3.9mm) 2= Ø5.2mm (CABLE Ø=4.0~5.2mm) 3= Ø6.5mm (CABLE Ø=5.3~6.5mm)
10	CODING	0= 0° A= 40° C= 60° E= 80° H= 170° J= 205°
11	NUMBER OF CONTACTS	02= 2 PIN 03= 3 PIN 04= 4 PIN 05= 5 PIN 06= 6 PIN 07= 7 PIN 08= 8 PIN 09= 9 PIN 10= 10 PIN 14= 14 PIN
12	LOGO	8= LOGO AND "GRASP HERE" LOGO 9= NO LOGO, WITH "GRASP HERE" LOGO

POSITIONS	VIEW FROM TERMINATION SIDE	PIN PART
2 PIN		
3 PIN		
4 PIN		
5 PIN		
6 PIN		
7 PIN		
8 PIN		
9 PIN		
10 PIN		
14 PIN		



NOTES :

- 1.MATERIAL  
OUTER SHELL : PSU/PEI/PC  
INSULATOR : PEEK  
CONTACT : COPPER ALLOY  
CABLE COLLET : PSU/PEI/PC  
BACK NUT : PSU/PEI/PC
- 2.NUMBER OF CONTACT : 2 TO 14 POSITION
- 3.ALL DIMENSIONS ARE IN MILLIMETERS.
- 4.RoHS DIRECTIVE COMPLIANCE



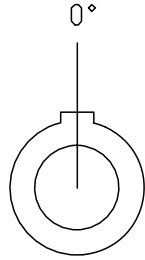
RoHS COMPLIANT	Unit:mm(inch)	PROJECTION	ZCables.com	
	GENERAL TOLERANCES: (UNLESS SPECIFIED)	D.R. 07/10/2023	TITLE	PD./FILE NO.
	0 = ±1 (0.039)	Philip	1P Series , Straight Plug , Male Solder Contact , Grey PSU , Blue , 7 Pin	
	0.0 = ±1.5 (0.062)	CH.K 07/10/2023	Philip	
0.000 = ±.15 (0.006)	APV.D 07/10/2023	Richard	SCALE	SIZE
0° = ± 2'			1:1	A4
0.0° = ± 1'			PART NO.	REV. 01
			PZACF1PXA14071	SHEET 1 OF 2

1	2	3	4	5	6	7	8			
					REV.	ECN NO.	DESCRIPTION	MDF'D	APP'D	DATE
					01		INITIAL DESIGN	Philip	Richard	07/10/2023
					02					
					03					

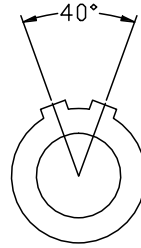
THIS DRAWING AND THE DATA DISCLOSED HEREIN OR HEREWITH IS NOT TO BE REPRODUCED USED OR DISCLOSED IN WHOLE OR IN PART TO ANYONE WITHOUT THE PERMISSION OF JESS-LINK PRODUCTS CO.,LTD.(JPC)

CUSTOMER DRAWING  
DRWC-XXXXXX

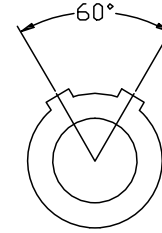
CODING (PLUG FRONT VIEW):



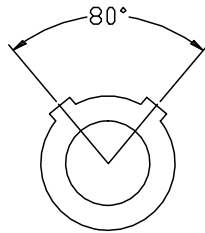
0



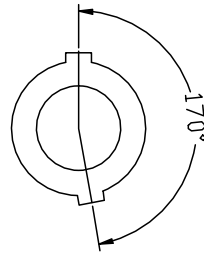
A



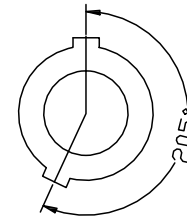
C



E



H



J

RoHS COMPLIANT	Unit:mm(inch)	PROJECTION 	ZCables.com	
	GENERAL TOLERANCES: (UNLESS SPECIFIED)	D.R. 07/10/2023		
	0 =±1 (0.039)	Philip	1P Series , Straight Plug , Male Solder Contact ; Grey PSU , Blue , 7 Pin	
	0.0 =±.5 (0.02)	CH.K 07/10/2023	SCALE	SIZE
0.00 =±.3 (0.012)	Philip	1:1	A4	PZACF1PXA14071
0.000=±.15(0.006)	APV.D 07/10/2023	REV.	01	SHEET 2 OF 2
0° =± 2'	Richard			
0.0° =± 1'				