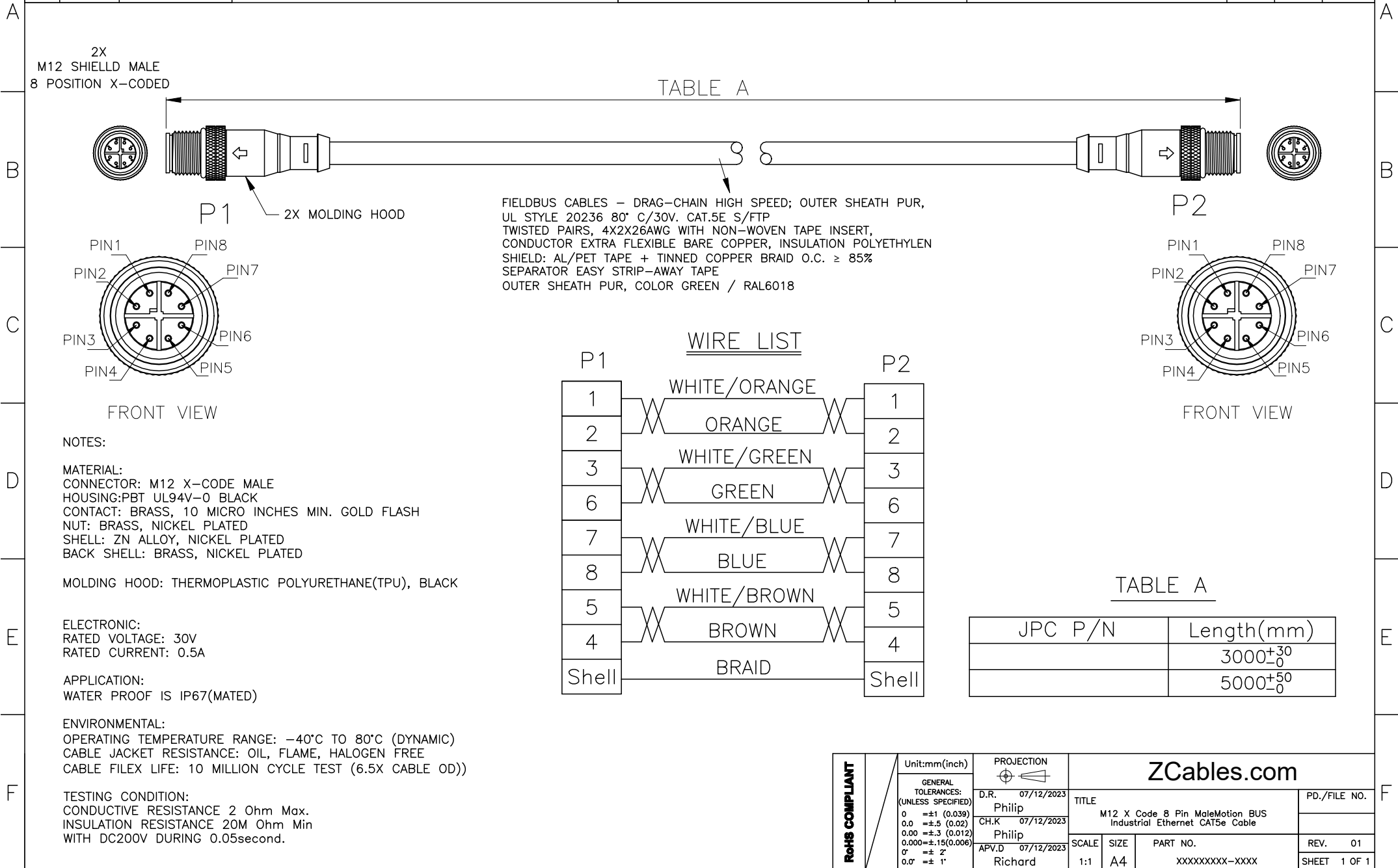
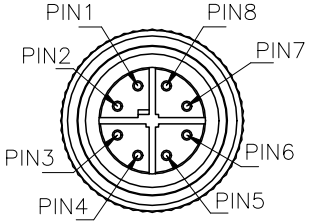
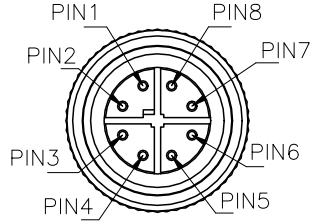


1	2	3	4	5	6	7	8				
THIS DRAWING AND THE DATA DISCLOSED HEREIN OR HEREWITH IS NOT TO BE REPRODUCED USED OR DISCLOSED IN WHOLE OR IN PART TO ANYONE WITHOUT THE PERMISSION OF JESS-LINK PRODUCTS CO.,LTD.(JPC)				CUSTOMER DRAWING DRWC-XXXXXX		REV.	ECN NO.	DESCRIPTION	MDF'D	APP'D	DATE
						01		INITIAL DESIGN	Philip	Richard	07/12/2023
						02					
						03					



2X
M12 SHIELLD MALE
8 POSITION X-CODED

P1 2X MOLDING HOOD



NOTES:

MATERIAL:
CONNECTOR: M12 X-CODE MALE
HOUSING:PBT UL94V-0 BLACK
CONTACT: BRASS, 10 MICRO INCHES MIN. GOLD FLASH
NUT: BRASS, NICKEL PLATED
SHELL: ZN ALLOY, NICKEL PLATED
BACK SHELL: BRASS, NICKEL PLATED

MOLDING HOOD: THERMOPLASTIC POLYURETHANE(TPU), BLACK

ELECTRONIC:
RATED VOLTAGE: 30V
RATED CURRENT: 0.5A

APPLICATION:
WATER PROOF IS IP67(MATED)

ENVIRONMENTAL:
OPERATING TEMPERATURE RANGE: -40°C TO 80°C (DYNAMIC)
CABLE JACKET RESISTANCE: OIL, FLAME, HALOGEN FREE
CABLE FILEX LIFE: 10 MILLION CYCLE TEST (6.5X CABLE OD))

TESTING CONDITION:
CONDUCTIVE RESISTANCE 2 Ohm Max.
INSULATION RESISTANCE 20M Ohm Min
WITH DC200V DURING 0.05second.

RoHS COMPLIANT	Unit:mm(inch)	PROJECTION	ZCables.com		
	GENERAL TOLERANCES: (UNLESS SPECIFIED)				
	0 =±1 (0.039)	D.R. 07/12/2023	TITLE	PD./FILE NO.	
	0.0 =±.5 (0.02)	Philip	M12 X Code 8 Pin MaleMotion BUS Industrial Ethernet CAT5e Cable		
0.00 =±.3 (0.012)	CH.K 07/12/2023	SCALE	SIZE	PART NO.	REV. 01
0.000=±.15(0.006)	Philip	1:1	A4	XXXXXXXX-XXXX	SHEET 1 OF 1
0° =± 2'	APV.D 07/12/2023				
0.0° =± 1'	Richard				