

1	2	3	4	5	6	7	8				
THIS DRAWING AND THE DATA DISCLOSED HEREIN OR HEREWITH IS NOT TO BE REPRODUCED USED OR DISCLOSED IN WHOLE OR IN PART TO ANYONE WITHOUT THE PERMISSION OF JESS-LINK PRODUCTS CO.,LTD.(JPC)				CUSTOMER DRAWING DRWC-XXXXXX		REV.	ECN NO.	DESCRIPTION	MDF'D	APP'D	DATE
						01		INITIAL DESIGN	Philip	Richard	07/12/2023
						02					
						03					

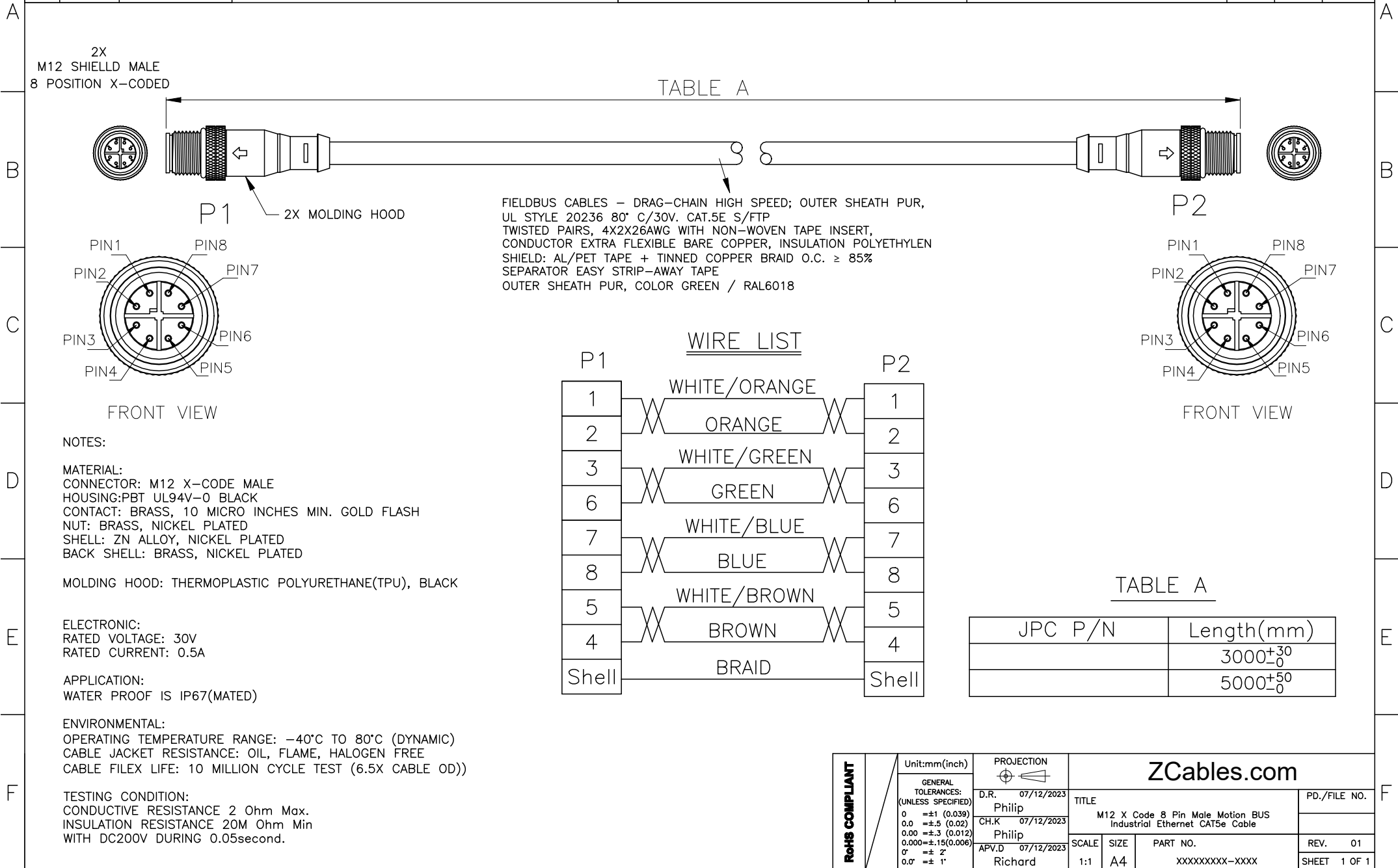


TABLE A

FIELDBUS CABLES - DRAG-CHAIN HIGH SPEED; OUTER SHEATH PUR, UL STYLE 20236 80° C/30V. CAT.5E S/FTP
 TWISTED PAIRS, 4X2X26AWG WITH NON-WOVEN TAPE INSERT, CONDUCTOR EXTRA FLEXIBLE BARE COPPER, INSULATION POLYETHYLEN
 SHIELD: AL/PET TAPE + TINNED COPPER BRAID O.C. ≥ 85%
 SEPARATOR EASY STRIP-AWAY TAPE
 OUTER SHEATH PUR, COLOR GREEN / RAL6018

WIRE LIST

P1		P2
1	WHITE/ORANGE	1
2	ORANGE	2
3	WHITE/GREEN	3
6	GREEN	6
7	WHITE/BLUE	7
8	BLUE	8
5	WHITE/BROWN	5
4	BROWN	4
Shell	BRAID	Shell

TABLE A

JPC P/N	Length(mm)
	3000 ⁺³⁰ ₋₀
	5000 ⁺⁵⁰ ₋₀

NOTES:

MATERIAL:
 CONNECTOR: M12 X-CODE MALE
 HOUSING:PBT UL94V-0 BLACK
 CONTACT: BRASS, 10 MICRO INCHES MIN. GOLD FLASH
 NUT: BRASS, NICKEL PLATED
 SHELL: ZN ALLOY, NICKEL PLATED
 BACK SHELL: BRASS, NICKEL PLATED

MOLDING HOOD: THERMOPLASTIC POLYURETHANE(TPU), BLACK

ELECTRONIC:
 RATED VOLTAGE: 30V
 RATED CURRENT: 0.5A

APPLICATION:
 WATER PROOF IS IP67(MATED)

ENVIRONMENTAL:
 OPERATING TEMPERATURE RANGE: -40°C TO 80°C (DYNAMIC)
 CABLE JACKET RESISTANCE: OIL, FLAME, HALOGEN FREE
 CABLE FILEX LIFE: 10 MILLION CYCLE TEST (6.5X CABLE OD))

TESTING CONDITION:
 CONDUCTIVE RESISTANCE 2 Ohm Max.
 INSULATION RESISTANCE 20M Ohm Min
 WITH DC200V DURING 0.05second.

RoHS COMPLIANT	Unit:mm(inch)	PROJECTION 	ZCables.com	
	GENERAL TOLERANCES: (UNLESS SPECIFIED)	D.R. 07/12/2023		
	0 =±1 (0.039)	Philip	TITLE	M12 X Code 8 Pin Male Motion BUS Industrial Ethernet CAT5e Cable
	0.0 =±1.5 (0.062)	Philip	REV. 01	
0.000=±.15(0.006)	Richard	SCALE	1:1	
0° =± 2'		SIZE	A4	
0.0° =± 1'		PART NO.	XXXXXXXX-XXXX	
		SHEET	1 OF 1	