

| | | | | | | | | | | | |
|---|---|---|---|---------------------------------|---|------|---------|----------------|--------|---------|------------|
| 1 | 2 | 3 | 4 | 5 | 6 | 7 | 8 | | | | |
| THIS DRAWING AND THE DATA DISCLOSED HEREIN OR HEREWITH IS NOT TO BE REPRODUCED USED OR DISCLOSED IN WHOLE OR IN PART TO ANYONE WITHOUT THE PERMISSION OF JESS-LINK PRODUCTS CO.,LTD.(JPC) | | | | CUSTOMER DRAWING DRWC-XXXXXX | | REV. | ECN NO. | DESCRIPTION | MDF'D | APP'D | DATE |
| | | | | | | 01 | | INITIAL DESIGN | Philip | Richard | 07/12/2023 |
| | | | | | | 02 | | | | | |
| | | | | | | 03 | | | | | |

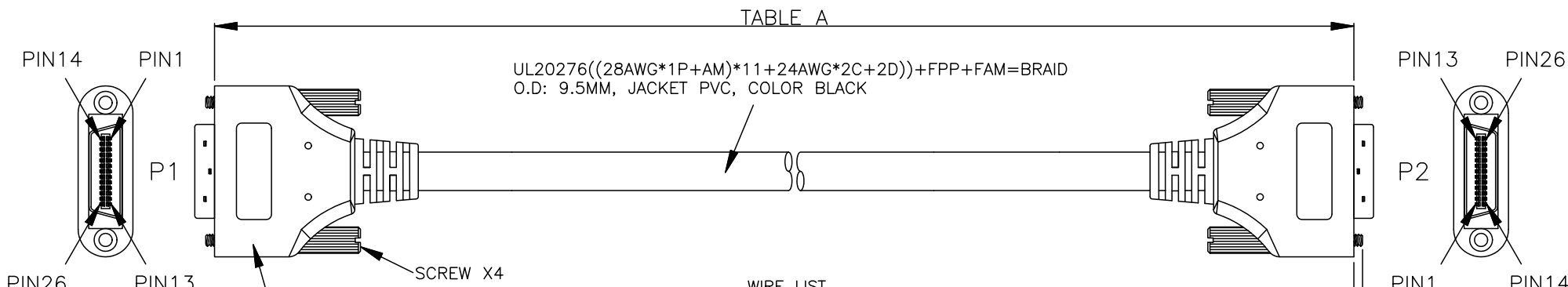
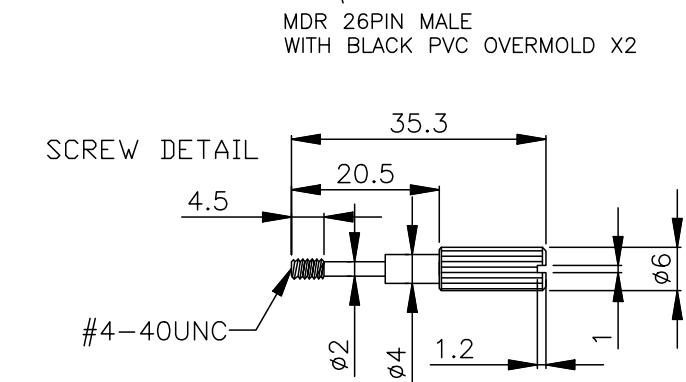


TABLE A
 UL20276((28AWG*1P+AM)*11+24AWG*2C+2D))+FPP+FAM=BRAID
 O.D: 9.5MM, JACKET PVC, COLOR BLACK



| WIRE LIST | | |
|-----------|-------------------|-------|
| P1 | | P2 |
| 1 | RED(24AWG 12V DC) | 1 |
| 14 | DRAIN(24AWG GND) | 14 |
| 2 | WHITE | 25 |
| 15 | WHITE/BLACK | 12 |
| 3 | WHITE | 24 |
| 16 | WHITE/GREEN | 11 |
| 4 | WHITE | 23 |
| 17 | WHITE/BLUE | 10 |
| 5 | WHITE | 22 |
| 18 | WHITE/PURPLE | 9 |
| 6 | WHITE | 21 |
| 19 | WHITE/GRAY | 8 |
| 7 | WHITE | 20 |
| 20 | WHITE/YELLOW | 7 |
| 8 | WHITE | 19 |
| 21 | WHITE/ORANGE | 6 |
| 9 | WHITE | 18 |
| 22 | WHITE/BROWN | 5 |
| 10 | WHITE | 17 |
| 23 | WHITE/GREEN | 4 |
| 11 | --- | 16 |
| 24 | WHITE/RED | 3 |
| 12 | WHITE | 15 |
| 25 | WHITE/RED | 2 |
| 13 | DRAIN(24AWG GND) | 13 |
| 26 | BLACK(24AWG 12V) | 26 |
| Shell | BRAID | Shell |

| TABLE A | |
|----------------|------------|
| JPC P/N | Length(mm) |
| PZBMLE030-0001 | 3000±20 |

NOTES:
 MATERIAL:
 CONNECTOR: MDR 26PIN MALE, GOLD FLASH CONTACT, BLACK INSULATOR
 SCREW: #4-40UNC, 6.0*35.3MM, NICKEL PLATED
 ELECTRONIC:
 RATED CURRENT: 1A
 RATED VOLTAGE: 30V
 ENVIRONMENTAL:
 OPERATING TEMPERATURE: -20°C TO 75°C

TESTING CONDITION:
 CONDUCTIVE RESISTANCE 2 Ohm Max.
 INSULATION RESISTANCE 20M Ohm Min
 WITH DC200V DURING 0.05Second.
 100% OPEN, SHORT MISWITED TEST

| | | | | | |
|-----------------|--|-----------------|---|----------------|--------------|
| RoHS COMPLIANT | Unit:mm(inch) | PROJECTION | ZCables.com | | |
| | GENERAL TOLERANCES: (UNLESS SPECIFIED) | D.R. 07/12/2023 | | | |
| | 0 =±1 (0.039) | Philip | TITLE | PD./FILE NO. | |
| | 0.0 =±1 (0.039) | Philip | MDR 26 Pin To MDR 26 Pin With PoCL Cable Assembly | | |
| 0.0 =±1 (0.039) | Philip | SCALE | SIZE | PART NO. | REV. 01 |
| 0.0 =±1 (0.039) | Richard | 1:1 | A4 | PZBMLFOXX-XXXX | SHEET 1 OF 1 |