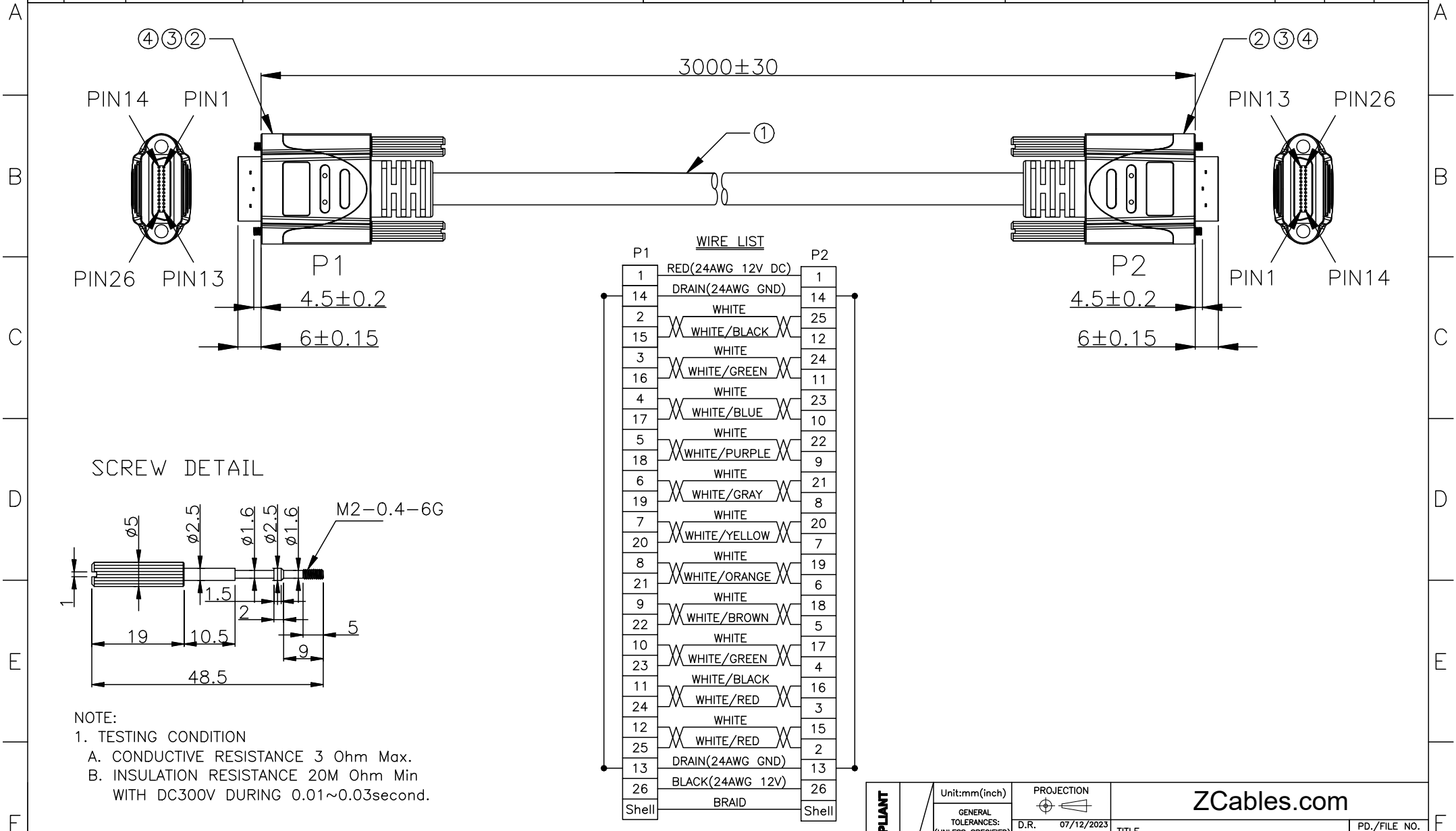
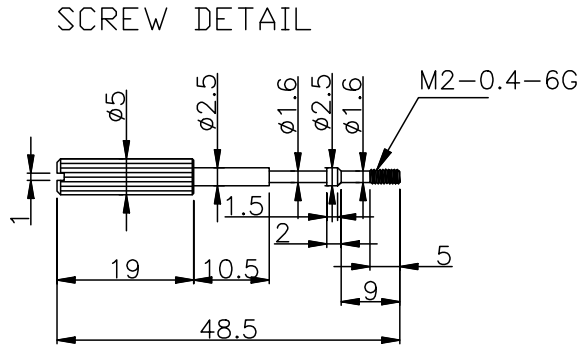


1	2	3	4	5	6	7	8				
THIS DRAWING AND THE DATA DISCLOSED HEREIN OR HEREWITH IS NOT TO BE REPRODUCED USED OR DISCLOSED IN WHOLE OR IN PART TO ANYONE WITHOUT THE PERMISSION OF JESS-LINK PRODUCTS CO.,LTD.(JPC)				CUSTOMER DRAWING DRWC-XXXXXX		REV.	ECN NO.	DESCRIPTION	MDF'D	APP'D	DATE
						01		INITIAL DESIGN	Philip	Richard	07/12/2023
						02					
						03					



WIRE LIST		
P1		P2
1	RED(24AWG 12V DC)	1
14	DRAIN(24AWG GND)	14
2	WHITE	25
15	WHITE/BLACK	12
3	WHITE	24
16	WHITE/GREEN	11
4	WHITE	23
17	WHITE/BLUE	10
5	WHITE	22
18	WHITE/PURPLE	9
6	WHITE	21
19	WHITE/GRAY	8
7	WHITE	20
20	WHITE/YELLOW	7
8	WHITE	19
21	WHITE/ORANGE	6
9	WHITE	18
22	WHITE/BROWN	5
10	WHITE	17
23	WHITE/GREEN	4
11	WHITE/BLACK	16
24	WHITE/RED	3
12	WHITE	15
25	WHITE/RED	2
13	DRAIN(24AWG GND)	13
26	BLACK(24AWG 12V)	26
Shell	BRAID	Shell



NOTE:
 1. TESTING CONDITION
 A. CONDUCTIVE RESISTANCE 3 Ohm Max.
 B. INSULATION RESISTANCE 20M Ohm Min
 WITH DC300V DURING 0.01~0.03second.

ITEM	DESCRIPTION	Q'TY
4	OVERMOLD: MOLDING BLACK PVC	2PCS
3	SCREW: M2-0.4-6G 5.0*48.5MM, NICKEL PLATED.	4PCS
2	HDR26 MALE GOLD FLASH CONTACTS, BLACK INSULATOR	2PCS
1	CABLE: UL20276 ((28AWG*1P+AM)*11PCS+24AWG*2C+2D)+M+AM+B BLACK PVC JACKET OD:9.5MM	A/R

RoHS COMPLIANT	Unit:mm(inch)	PROJECTION	ZCables.com	
	GENERAL TOLERANCES: (UNLESS SPECIFIED) 0 =±1 (0.039) 0.0 =±.5 (0.02) 0.00 =±.3 (0.012) 0.000=±.15(0.006) 0° =± 2' 0.0° =± 1'	D.R. 07/12/2023 Philip CH.K 07/12/2023 Philip APV,D 07/12/2023 Richard		
	SCALE	SIZE	PART NO.	REV. 01
	1:1	A4	PZBMLG030-0001	SHEET 1 OF 1