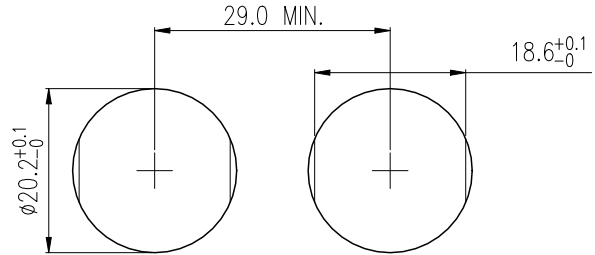
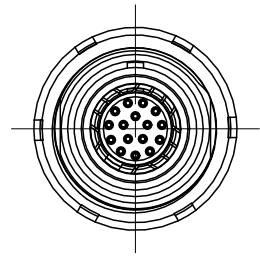
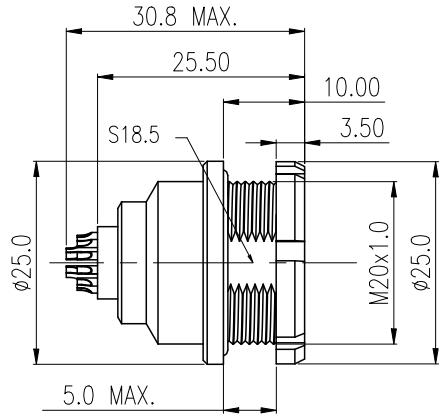


THIS DRAWING AND THE DATA DISCLOSED HEREIN OR HEREWITH IS NOT TO BE REPRODUCED USED OR DISCLOSED IN WHOLE OR IN PART TO ANYONE WITHOUT THE PERMISSION OF JESS-LINK PRODUCTS CO.,LTD.(JPC)

CUSTOMER DRAWING  
DRWC-XXXXXX

REV.	ECN NO.	DESCRIPTION	MDF'D	APP'D	DATE
01		INITIAL DESIGN	Philip	Richard	11/06/2023
02					
03					



PANEL CUT-OUT

NOTE:

- Material and finish  
Outer shell: Copper alloy, Cr plating  
Contact: Copper alloy, Gold plating over Ni  
Insulator: PEEK UL94 V-1  
O-ring: VMQ  
Other parts: Copper alloy, Ni plating
- Mechanical characteristics  
Insertion Force: 34.3N MAX.  
Extraction Force: 34.3N MAX.  
Endurance: 5000 mating cycles  
Vibration: 10-2000Hz , 15g comply with EIA-364-28  
Shock: 100g amplitude, half sine pulse of 3ms, no discontinuity > 1us EIA-364-27
- Electrical specifications  
Contact resistance: 8.7 mOhm MAX.  
After 5000 Cycles: 10 mOhm MAX.  
Insulation resistance: >100 Mohm  
Rated current: 2PIN 25.0A (Per Pin) 3PIN 17.0A (Per Pin)  
4PIN 15.0A (Per Pin) 5PIN 14.0A (Per Pin)  
6PIN 12.0A (Per Pin) 7PIN 11.0A (Per Pin)  
8PIN 10.0A (Per Pin) 10PIN 8.0A (Per Pin)  
12PIN 7.0A (Per Pin) 14PIN 6.5A (Per Pin)  
16PIN 6.0A (Per Pin) 18PIN 5.5A (Per Pin)  
19PIN 5.0A (Per Pin) **26PIN 2.0A (Per Pin)**  
32PIN 1.5A (Per Pin)
- Characteristics  
Waterproof level: IP68 (Mating)  
Operating temperature: -55°C ~ +200°C  
Corrosion resistance: 144 H salt mist, 5 % salt solution, 35°C  
Humidity: 21 days at 95% RH
- Max Wire Size (AWG): #16 for 2pin #18 for 3pin  
#20 for 4~7pin #22 for 8&10pin  
#24 for 12~19pin **#28 for 26&32pin**
- RoHS compliance

PART NO: R - F 2 K N 2 6 0 4 0 0 0 0 0

CONTACT POS.	02-32=2pin-32pin
SHELL MATERIAL	0=Brass
CODE	CONTACT TYPE
4	Female Solder Contact
2	Male Solder Contact

CODE	KEY ANGLES
0	0°
A	30°
B	60°
..	..

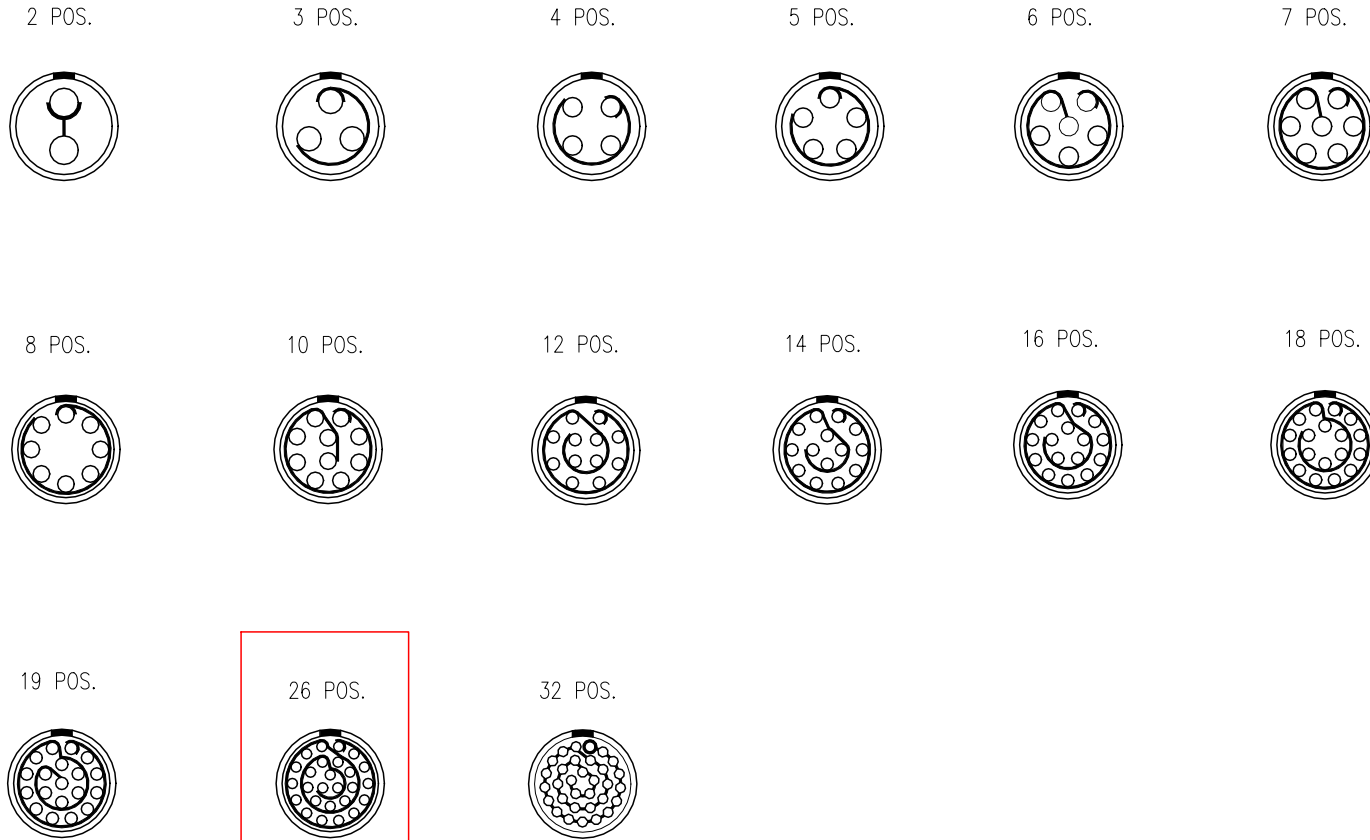
RoHS COMPLIANT	Unit:mm(inch)	PROJECTION	<b>ZCables.com</b>		
	GENERAL TOLERANCES: (UNLESS SPECIFIED)				
	0 =±1 (0.039)	D.R. 11/06/2023 Philip	TITLE	PD./FILE NO.	
	0.0 =±.5 (0.02)	CH.K 11/06/2023 Philip	2K Metal Series, 26 Pin, Receptacle, Female Contact, Fixed Socket, Solder, Snap Latch, IP68(Mating) Connector		
0.00 =±.3 (0.012)	APV.D 11/06/2023 Richard	SCALE	SIZE	PART NO.	REV. 01
0.000=±.15(0.006)		1:1	A4	PZACF2KXD19261	SHEET 1 OF 3
0° =± 2'					
0.0° =± 1'					

THIS DRAWING AND THE DATA DISCLOSED HEREIN OR HEREWITH IS NOT TO BE REPRODUCED USED OR DISCLOSED IN WHOLE OR IN PART TO ANYONE WITHOUT THE PERMISSION OF JESS-LINK PRODUCTS CO.,LTD.(JPC)

CUSTOMER DRAWING  
DRWC-XXXXXX

REV.	ECN NO.	DESCRIPTION	MDF'D	APP'D	DATE
01		INITIAL DESIGN	Philip	Richard	11/06/2023
02					
03					

view from termination side pin part



<b>RoHS COMPLIANT</b>	Unit:mm(inch)	PROJECTION 	<b>ZCables.com</b>		
	GENERAL TOLERANCES: (UNLESS SPECIFIED) 0 =±1 (0.039) 0.0 =±.5 (0.02) 0.00 =±.3 (0.012) 0.000=±.15(0.006) 0° =± 2° 0.0° =± 1°				TITLE 2K Metal Series, 26 Pin, Receptacle, Female Contact, Fixed Socket, Solder, Snap Latch, IP68(Mating) Connector
	D.R. 11/06/2023 Philip	APV.D 11/06/2023 Richard	SCALE 1:1	SIZE A4	PD./FILE NO.
	CH.K 11/06/2023 Philip	APV.D 11/06/2023 Richard	SCALE 1:1	SIZE A4	REV. 01 SHEET 2 OF 3

ZCables.com

TITLE  
2K Metal Series, 26 Pin, Receptacle, Female Contact, Fixed Socket, Solder, Snap Latch, IP68(Mating) Connector

PD./FILE NO.

SCALE 1:1

SIZE A4

PART NO.

PZACF2KXD19261

REV. 01

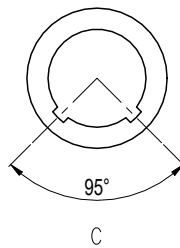
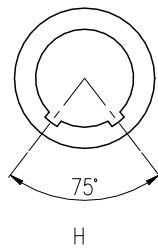
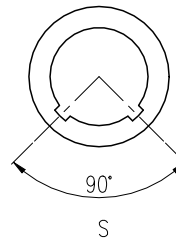
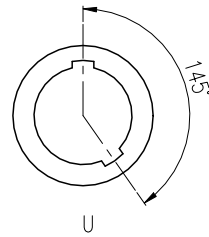
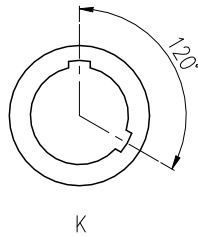
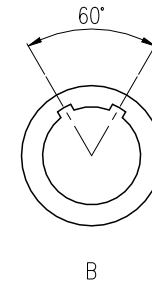
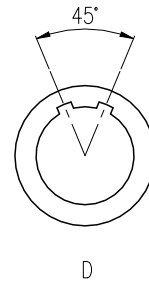
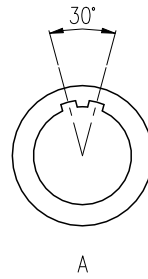
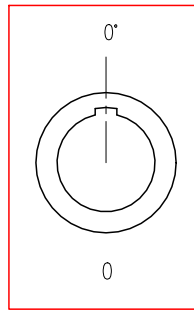
SHEET 2 OF 3

THIS DRAWING AND THE DATA DISCLOSED HEREIN OR HEREWITH IS NOT TO BE REPRODUCED USED OR DISCLOSED IN WHOLE OR IN PART TO ANYONE WITHOUT THE PERMISSION OF JESS-LINK PRODUCTS CO.,LTD.(JPC)

CUSTOMER DRAWING  
DRWC-XXXXXX

REV.	ECN NO.	DESCRIPTION	MDF'D	APP'D	DATE
01		INITIAL DESIGN	Philip	Richard	11/06/2023
02					
03					

KEY ANGLES (RECEPTACLE FRONT VIEW):



<b>RoHS COMPLIANT</b>	Unit:mm(inch)	PROJECTION 	<b>ZCables.com</b>	
	GENERAL TOLERANCES: (UNLESS SPECIFIED)	D.R. 11/06/2023		
	0 =±1 (0.039)	Philip	2K Metal Series, 26 Pin, Receptacle, Female	
	0.0 =±.5 (0.02)	CH.K 11/06/2023	Contact, Fixed Socket, Solder, Snap Latch, IP68(Mating) Connector	
0.00 =±.3 (0.012)	Philip	SCALE	SIZE	PART NO.
0.000=±.15(0.006)	APV.D 11/06/2023	1:1	A4	PZACF2KXD19261
0° =± 2'	Richard			REV. 01
0.0° =± 1'				SHEET 3 OF 3