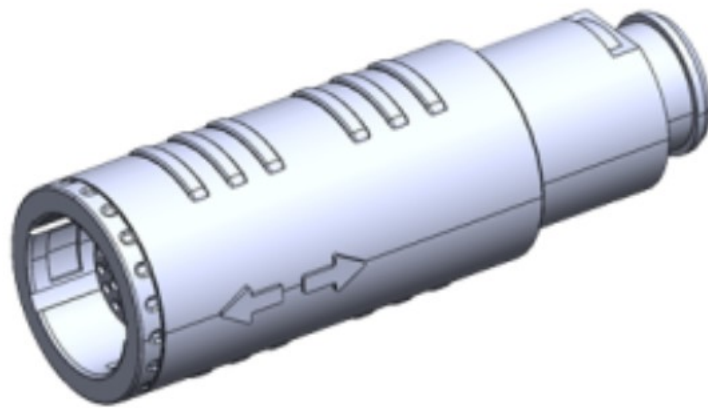


Push-Pull Circular Connector



2P Series Connector

2P Plastic Series, Grey, 26 Pin, Plug, Female Contact, Straight, Solder, Snap Latch, IP50 (Mating) Connector

Technical Data

Contact Number	26
Current Rating	2 A
Operating Voltage	300 V AC RMS
Operating Temperature	-55 to 150°C
Insulation Resistance	1000 GΩ Min
Contact Resistance	8.5 mΩ Max
Endurance (Latching)	1000 Min
Mating/Un-mating Force	30 N Max
Protection Class	IP50 (Mating)
Termination	Soldering

Material

Outer Shell	PSU
Insulator	PEEK
Contact	Copper Alloy
Cable Collet	PSU
Back Nut	PSU

Geometric Appearance

