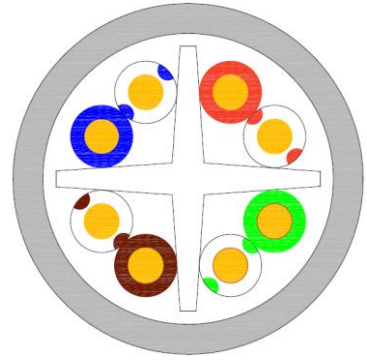
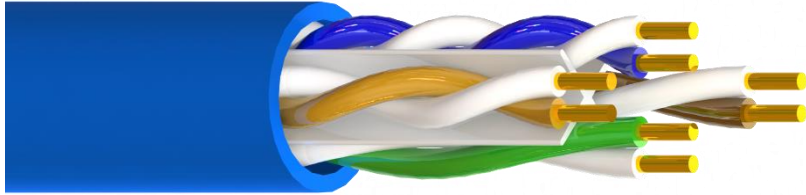


Cat.6 U/UTP 24AWG Solid Wires Cable



Features

- Slim OD and compact Pull-Box design for economic shipping cost
- Compliant with ANSI/TIA 568.2-D Cat.6 performance up to 250MHz
- UL444 cable safety listed
- Power over HDBaseT™ (PoH) applications up to 100 watts
- Construction Products Regulation (CPR) EuroClass Eca

Standard Compliance

- ANSI/TIA-568.2-D
- ISO/IEC 11801-1
- IEC 61156-5
- UL 444 (for UL CM or CMR PVC jacket material only)
- UL 444-LP
- IEC 60332-1-2
- IEC 61034-2 smoke (for LSZH jacket material only)
- IEC 60754-2 halogen / acid (for LSZH jacket material only)
- RoHS 2
- CPR Eca

Part Number

ZCBSOB 0207035 14 C6 U/UTP 24AWG solid wires, UL CMR, RAL7035 gray color, 1000 feet in neutral easy box

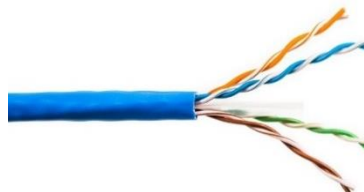
ZCBxOB xxxxxxxx 14

(1) (2) (3)

x (1) **Jacket material** B=IEC60332-1-2 LSZH, S=UL CM PVC, T=UL CMR PVC
xxxxxxx (2) **Jacket color** 02 07035=gray (RAL7035), 99 P367C=others (PANTONE 367C.)
14 (3) **Packaging** 14=1000feet in neutral easy box, 34=1000feet in wooden reel

Packing Information

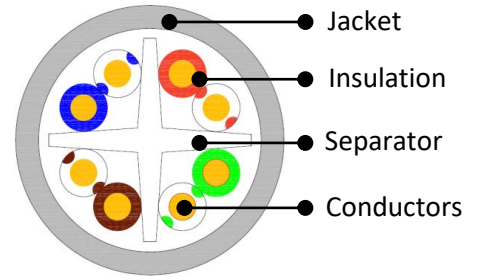
- 1000feet in a Pull-Box
- Pull-Box size : L37.0 x W37.0 x H21.0cm
- Net weight per neutral easy box: 10.3 kg
- Gross weight per neutral easy box: 11.0 kg
- * For more packing Information please contact ZCables sales department



Cat.6 U/UTP 24AWG Solid Wires Cable

Material Specifications

- Conductors Bare copper, 24AWG, 1 x 0.520±0.005mm
- Insulation HDPE, O.D. 0.95±0.03mm
- Foil Screen n/a
- Braid n/a
- Drain wire n/a
- Jacket Min. 0.55mm thickness, O.D. 5.6±0.2mm
- Separator PE



Printing on the cable

- LSZH U/UTP INSTALL CABLE 24AWG 4PR LSZH ISO/IEC 11801 CLASS E & ANSI/TIA-568.2-D CAT.6
XXXXXXXX-X XXXM
- CM PVC U/UTP INSTALL CABLE 24AWG 4PR E178558 C(UL)US TYPE CM 75°C ISO/IEC 11801 CLASS E & ANSI/TIA-568.2-D CAT.6 XXXXXXXX-X XXXM

Installation Information

- Installing temperature 0°C to 50°C (32°F to 122°F)
- Storage temperature -40°C to 70°C (-40°F to 158°F) , under static conditions
- Operating temperature -20°C to 60°C (-4°F to 140°F) , under static conditions
- Pulling tension Max. 100N
- Band radius Min. 22.4mm (4x of cable O.D.)
- UL temperature rating 75°C

Electrical Characteristics (ANSI/TIA-568.2-D, Cable, 100m)

- DC resistance Max. 9.38Ω/100m for each conductor
- DC resistance unbalance Max. 5% within a pair at 20°C
- DC resistance unbalance pair-pair n/a (for Cat.8 cable only)
- Dielectric strength 1KV d.c./0.7KV a.c. for 1min. or 2.5KV d.c./1.7KV a.c. for 2s (IEC61156-5)
- Insulation resistance 5000MΩ/km (IEC61156-5)
- Mutual capacitance Max. 5.6nF/100m, 1kHz at 20°C
- Capacitance unbalance pair-ground Max. 330pF/100m, 1kHz at 20°C
- Surface transfer impedance n/a (Screened only)
- Coupling attenuation n/a (Screened only)
- Propagation delay Max. 536ns/100m at 250MHz
- Delay skew Max. 45ns/100m, from 1 to 250MHz at 20°C, 40°C & 60°C
- Nominal velocity propagation 70%
- Characteristic Impedance 100±5Ω at 100MHz
- PoE 60Vd.c., 4PPoE 100W, IEEE802.3bt type 4
- UL voltage rating 300V(UL444)

Transmission performance (ANSI/TIA-568.2-D, Cable, 100m, at 20°C)

Frequency MHz	Return loss Min. dB	Insertion loss Max. dB	NEXT Min. dB	PSNEXT Min. dB	ACRF Min. dB	PSACRF Min. dB	TCL Min. dB
1	20.0	2.0	74.3	72.3	67.8	64.8	40.0
4	23.0	3.8	65.3	63.3	55.8	52.8	40.0
100	20.1	19.8	44.3	42.3	27.8	24.8	30.0
250	17.3	32.8	38.3	36.3	19.8	16.8	26.0
500	-	-	-	-	-	-	-
1000	-	-	-	-	-	-	-
2000	-	-	-	-	-	-	-